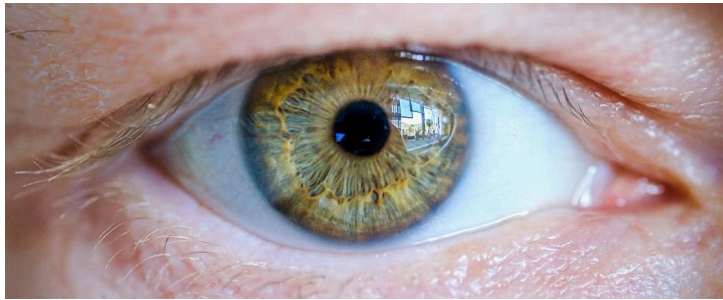


Course: Eye to the Soul



Sometimes as artists it is helpful to take another “look” at a similar subject. During this session we will dive in deep to focus on the human eye. This will hone your drawing skills in a unique way.

In order to prepare for this session, print the line drawing onto computer paper using the A4 size on your printer. It should be approximately 10.75 X 4.5 inches. You can draw it smaller if you prefer as drawing full size will take more time. We may not complete the whole drawing during our session, but you will have enough time to get a good start on it and know how to complete your drawing. I also wanted to make it easier on those of us with visual challenges.

See the supply list. **If you don't have artist quality pencil crayons use the colors you have as close to the reference photo colors.** A rule of thumb to follow: “Use two or three shades of the same color, light, medium, and dark.”

I will be drawing on Pastelmat, but please feel free to use what you have.

[Eye Human Iris - Free photo on Pixabay - Pixabay](#)

SUPPLY LIST

Paper – Clairefontaine Pastelmat No 6. White or Light Grey 4” X 6”

Graphite Paper or carbon paper for copying your design

Cotton buds or makeup sponges

Colored Pencils, Faber Castell Polychromos

Black 199

White 101

Cold Grey II 231

Cold Grey IV 233

Olive Green Yellowish 173

Dark Sepia 175

Dark Indigo 157

Caput Mortem Violet 263

Cinnamon 189

Dark Cadmium Yellow 108

Beige Red 192

Ivory 103

Dark Flesh (Salmon) 130

Light Ultramarine 140

Light Flesh 132

Prismacolor Substitution colors are:

Prismacolor:

Black PC935

Dark Umber PC947

White PC938

Indigo Blue PC901

Cool Grey 20% PC1060

Mahogany Red PC1029

Cool Grey 50% PC1063

Nectar PC1092

Kelp Green PC1090

Spanish Orange PC1003

Light Peach PC927

Cream PC914

Bluish Pink PC928

Caribbean Sea PC1103

Deco Pink PC1014

Again, **if you don't have artist quality pencil crayons use the colors you have** please don't feel like you cannot participate if you don't have the "exact" same materials. A rule of thumb to follow: "Use two or three shades of the same color, light, medium and dark."

Art Supplies to Consider:

1. [Prisma Colored Pencils](#)
2. [Faber Castell Polychromos Pencils](#)
3. Pastelmat [Clairefontaine 24 x 30 cm PastelMat Pastel Card Pad No1, 360 g, 12 Sheets, Assorted Colours : Amazon.ca: Home](#) (Canadian Link) Click [here](#) for American Link
4. Tombow Eraser [Tombow MONO Zero Eraser, Rectangle 2.5 mm, 1-Pack : Amazon.ca: Home](#) (Canadian Link) Click [here](#) for American Link
5. Faber Castell kneadable eraser, [Faber-Castell Kneaded Eraser with Case, Grey : Amazon.ca: Home](#) (Canadian Link) Click [here](#) for American Link

6. Slice Tool [Slice 10513 Pen Cutter, 3-Position Manual, Stays Sharp Upto 10x Longer Than Steel Blades, Dark Grey : Amazon.ca: Tools & Home Improvement](#) (Canadian Link) Click [here](#) for American Link

Line Drawing:

[Scan2024-06-13_165631.pdf](#)

